

A LEVEL MATHEMATICS

Areas of Study...

Proof

Algebra and functions

Coordinate geometry

Sequences and series

Trigonometry

Exponentials and logarithms

Differentiation

Integration

Numerical methods

Vectors

Quantities and units used in mechanics

Kinematics

Forces and Newton's Law

Moments

Statistical sampling

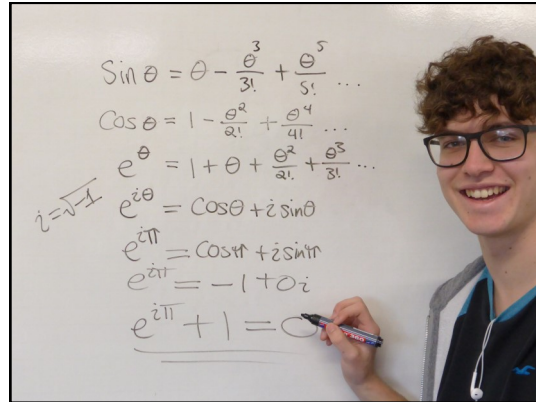
Data presentation and interpretation

Probability

Statistical distributions

Statistical hypothesis testing

The two year A Level in Mathematics is a blended curriculum where you will study both pure mathematics and applied mathematics alongside each other, making the connections between the abstract concepts and the practical application of mathematics.



Future Careers

All careers that are associated with:

Actuary, agriculture, research analysis, computer programming, software engineering, medicine, health, environment, sport, engineering, economics, accountancy, banking, risk management, design, entertainment industry, teaching.

Maths is a great subject to support your entry to higher education and complements most other A Levels well.

Assessment

Each paper is 2 hours, 100 marks, one third of the A Level grade.

The papers will be a mixture of short questions, single-mark questions and multi stage questions.

Paper 1: mostly Pure Maths

Paper 2: Pure Maths with Mechanical Applications

Paper 3: Pure Maths with Statistical Applications